

Marking plate for Fuseholders



0880.0001

See below:
[Approvals and Compliances](#)

Description
 - self-adhesive

Weblinks
[pdf data sheet](#), [html datasheet](#), [General Product Information](#), [Packaging details](#), [Distributor-Stock-Check](#), [Detailed request for product](#), [Microsite](#)

Technical Data

| | |
|----------|----------|
| Material | Aluminum |
|----------|----------|

Approvals and Compliances

Detailed information on product approvals, code requirements, usage instructions and detailed test conditions can be looked up in [Details about Approvals](#)

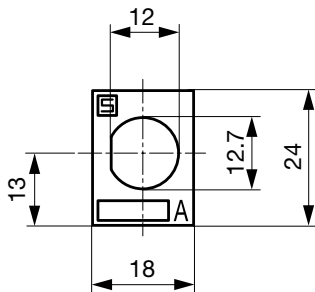
SCHURTER products are designed for use in industrial environments. They have approvals from independent testing bodies according to national and international standards. Products with specific characteristics and requirements such as required in the automotive sector according to IATF 16949, medical technology according to ISO 13485 or in the aerospace industry can be offered exclusively with customer-specific, individual agreements by SCHURTER.

Compliances

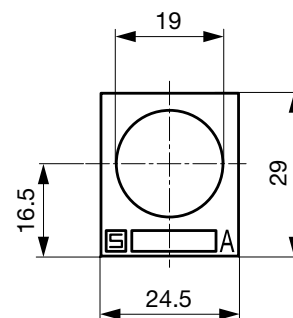
The product complies with following Guide Lines

| Identification | Details | Initiator | Description |
|----------------|---------|-------------|---|
| REACH | REACH | SCHURTER AG | On 1 June 2007, Regulation (EC) No 1907/2006 on the Registration, Evaluation, Authorization and Restriction of Chemicals 1 (abbreviated as "REACH") entered into force. |

Dimension [mm]



0880.0001



0880.0002

All Variants

| Suitable for | Designation | Material | Packaging unit [PCS] | Order Number |
|---|-----------------------------------|-------------------|----------------------|--------------|
| FEF, FEP, FEU, FIN, FIO, FPG1, FPG2, SWA1 (Frontpl), SWA2 (Print) | Marking plate 18 x 24 mm Ø12.7 mm | Aluminum anodized | 100 | 0880.0001 |
| FIZ, FUL | Marking plate 24.5 x 29 mm Ø19 mm | Aluminum anodized | 100 | 0880.0002 |

Most Popular.

Availability for all products can be searched real-time: <https://www.schurter.com/en/Stock-Check/Stock-Check-SCHURTER>