

IEC Appliance Inlet C14 or C18, sandwich Mounting, PCB- or Solder Terminal

V-Lock



Snap-in mounting



Screw-on mounting

**Description**

- Panel Mount:
- Snap-in or screw-on mounting on PCB, sandwich or rear-side
- Appliance Inlet, Pin temperature 70 °C, protection class I or II
- For PCB mounting

**Approvals**

- VDE Certificate Number: 40012767
- UL File Number: E96454
- CSA File Number: 38456

**Other versions on request**

- With solder terminals
- Variant with notch for V-Lock mating Cordsets

**References****Weblinks**

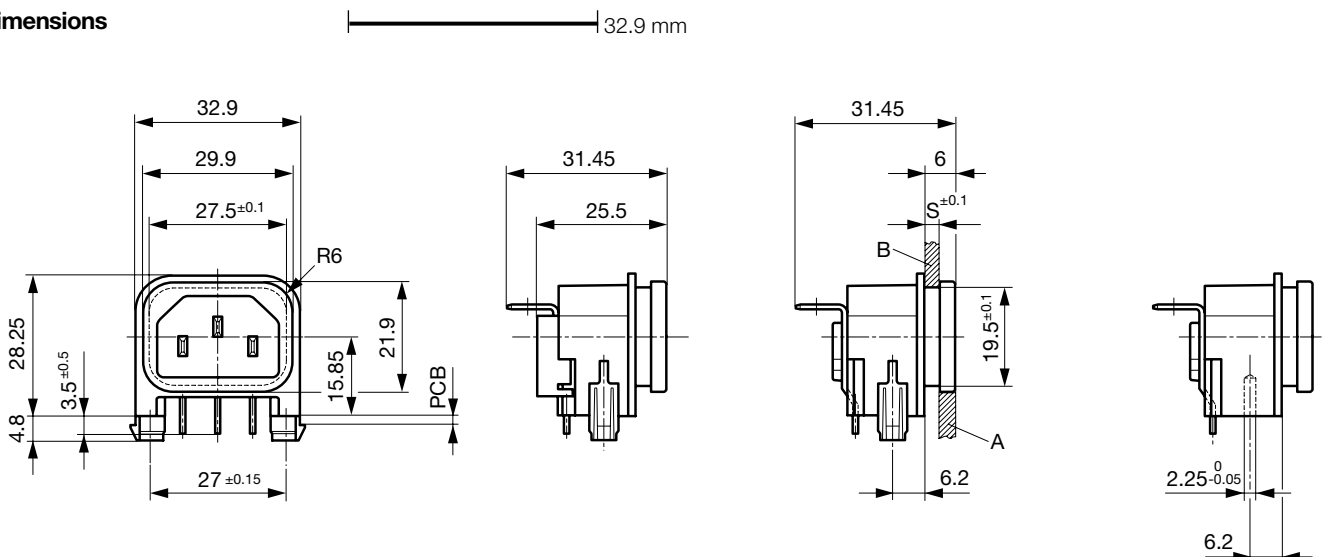
[pdf](#), [html](#), [General Product Information](#), [Approvals](#), [RoHS](#), [CHINA-RoHS](#), [Mating Connectors](#), [e-Store](#), [SCHURTER-Stock-Check](#), [Distributor-Stock-Check](#), [Accessories](#)

Newly available variants corresponding to V-Lock mating cordset. The connector is equipped with a notch intended for use with the latching cordset. The cord latching system prevents against accidental removal of the cordset.

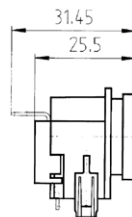
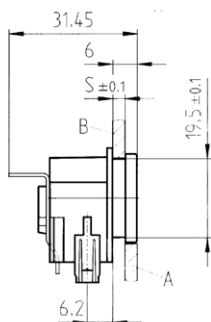
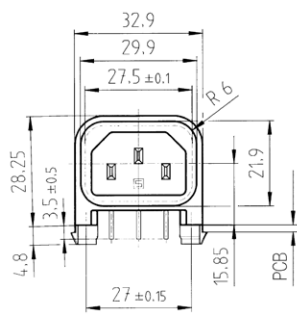
**Technical Data**

Ratings IEC	10A / 250VAC; 50Hz
Ratings UL/CSA	15A / 250VAC; 60Hz
Dielectric Strength	> 3kVAC between L-N > 3kVAC between L/N-PE (1 min/50Hz)
Allowable Operation Temp.	-25 °C to 70 °C
Degree of Protection	from front side IP 40 acc. to IEC 60529
Protection Class	Suitable for appliances with protection class 1 or 2 acc. to IEC 61140
Terminal	For PCB mounting ; Ground terminal: angled to pin axis Solder terminal on request
Panel Thickness s	Sandwich/rear-side: 1.5/2.5/3 mm
Material: Housing	Thermoplastic, black, UL 94V-0

Appliance Inlet	C14 acc. to IEC/EN 60320-1, UL 498, CSA C22.2 no. 42 (for cold conditions) pin-temperature 70 °C, 10A, Protection Class 1 or 2
-----------------	--

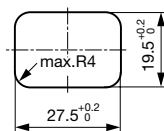
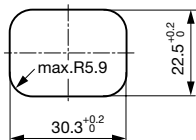
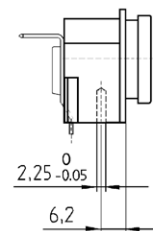
**Dimensions**

### Snap-in mounting



with insulation cover

### Screw on PCB mounting

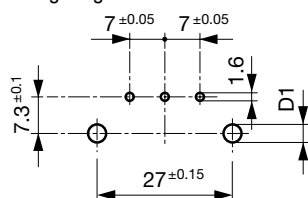


### Rear panel mounting

### Sandwich mounting

## Drilling diagrams

### Drilling diagram



d1 = 6 ± 0.05 for Snap-in mounting  
 d1 = 3.6 ± 0.05 for screw-on mounting  
 with self-tapping screws  
 3 mm (EJOT-PT), 2 screws enclosed

## Variants

Protection Class	Panel mounting	Panel Thickness s [mm]	Ground terminal 4.8 x 0.8 mm	Cover	Order Number
1	Screw	1	angled to pin axis		GSP2.9103.11
1	Screw	1.5	angled to pin axis		GSP2.9103.13
1	Screw	2	angled to pin axis		GSP2.9103.14
1	Screw	2.5	angled to pin axis		GSP2.9103.15
1	Screw	3	angled to pin axis		GSP2.9103.16
1	Screw	1.5	angled to pin axis	●	GSP2.9113.13
1	Screw	2	angled to pin axis	●	GSP2.9113.14
1	Screw	2.5	angled to pin axis	●	GSP2.9113.15
1	Screw	3	angled to pin axis	●	GSP2.9113.16
1	Snap-in	1	angled to pin axis		GSP2.9203.11
1	Snap-in	1.2	angled to pin axis		GSP2.9203.12
1	Snap-in	1.5	angled to pin axis		GSP2.9203.13
1	Snap-in	1.5	angled to pin axis		GSP2.9205.13
1	Snap-in	1.5	angled to pin axis		GSP2.9901.13
1	Snap-in	1.5	angled to pin axis		GSP2.9903.13

Protection Class	Panel mounting	Panel Thickness s [mm]	Ground terminal 4.8 x 0.8 mm	Cover	Order Number
1	Snap-in	2	angled to pin axis		GSP2.9203.14
1	Snap-in	2.5	angled to pin axis		GSP2.9203.15
1	Snap-in	2.5	angled to pin axis		GSP2.9213.15
1	Snap-in	3	angled to pin axis		GSP2.9203.16
1	Snap-in	1.5	angled to pin axis	●	GSP2.9213.13
1	Snap-in	2	angled to pin axis	●	GSP2.9213.14
1	Snap-in	3	angled to pin axis	●	GSP2.9213.16
2	Screw	1.5	straight		GSP2.9100.13
2	Screw	3	straight		GSP2.9100.16
2	Screw	2	straight	●	GSP2.9110.14
2	Screw	2.5	straight	●	GSP2.9110.15
2	Snap-in	1.5	straight		GSP2.9200.13
2	Snap-in	2.5	straight		GSP2.9200.15
2	Snap-in	1.5	straight	●	GSP2.9210.13
2	Snap-in	2	straight	●	GSP2.9210.14
2	Snap-in	2.5	straight	●	GSP2.9210.15
2	Snap-in	3	straight	●	GSP2.9210.16

Additional version on request, e.g.: Ground terminal straight or quick-connect terminal 6,3 x 0,8 mm

Suffix ".21" corresponds to the version with V-Lock mating cordset. The connector is equipped with a notch intended for use with the latching cordset. The cord latching system prevents against accidental removal of the cordset.

**Packaging unit** 50 Pcs

## Mating Outlets/Connectors

### Category / Description

#### ConnectorOverview complete



IEC Connector C15, Rewireable, Straight	0101
IEC Connector C15A, Rewireable, Straight	0102
IEC Connector C15A, Rewireable, Straight	0102-G
IEC Connector C15A, Rewireable, Angled	0112
IEC Connector C13, Rewireable, Angled	4012

[Connectorfurther types toGSP2](#)

...



#### Interconnection CordOverview complete

Interconnection Cord C13/C14, 10 A	6007.0212
------------------------------------	-----------

[Interconnection Cordfurther types toGSP2](#)

#### Power CordOverview complete



Power Cord with IEC Connector C13, Angled	0311
Power Cord with IEC Connector C13, Angled	3011
Power Cord with IEC Connector C13, Angled	3012
Power Cord with IEC Connector C13, Angled	3013
Power Cord with IEC Connector C13	3020

[Power Cordfurther types toGSP2](#)

...

#### Power Supply CordOverview complete



EU Power Supply Cord with IEC Connector C13, straight	6003.0215
EU Power Supply Cord with IEC Connector C13, straight	6004.0215
CH Power Supply Cord with IEC Connector C13, straight	6011.0215
IT Power Supply Cord with IEC Connector C13, straight	6026.0215
UK Power Supply Cord with IEC Connector C13, straight	6043.0114

[Power Supply Cordfurther types toGSP2](#)

...

**Category / Description**



[Power Supply or Interconnection Cord Overview complete](#)

Power Supply Cord with IEC Connector C13 straight, stripped end	6000.0214
Power Supply Cord with IEC Connector C13 angled, stripped end	6000.0224
Divers Power Supply and Interconnection Cords 10 A	6003.0204
Divers Power Supply and Interconnection Cords 10 A	6003.0205
Interconnection Cord C13/C14, 10 A	6007.0214
<a href="#">Power Supply or Interconnection Cord further types to GSP2</a>	...